



HEYSEN TRAIL MINIBUS SHUTTLE SERVICES ON THE FLEURIEU PENINSULA (including the Wild South Coast Way)

BOOKINGS ARE ESSENTIAL
CONTACT US FOR CURRENT PRICES, QUOTES & AVAILABILITY

phone or SMS 0488 705 224
email tbu@thebackyarduniverse.com.au
post PO Box 235 Yankalilla SA 5203

We offer two types of shuttle service for Heysen Trail walkers between Cape Jervis and Dashwood Gully (near Meadows):

- **Point to point.** Our preferred option. You travel to your walk finish location, our minibus meets you there and transfers you to your walk starting location. You then walk back to your finish location at your own pace. Prices vary according to which pairs of locations you want to use.
- **Accommodation to point / Point to accommodation.** Our minibus picks you up from your accommodation and transfers you to your walk starting location. At a prearranged time we meet you at your walk finishing location and return you to your accommodation. Prices vary according to which pairs of locations you want to use, and their distances from your accommodation. You can begin at one accommodation and finish at another. Our usual accommodation coverage includes the entire southern Fleurieu Peninsula, the Victor Harbor to Goolwa coast, the McLaren Vale wine region, Mt Compass & Kuitpo. Other accommodation locations, such as Adelaide city or airport, are available by arrangement.

You can begin your walk on one day and finish on another day. You can also do "single trip" if you have other transport arranged at either your starting or finishing locations. For example you're walking from your starting location to Cape Jervis and then travelling on a Kangaroo Island ferry.

Our minibus carries 1 to 11 passengers per trip. All Heysen Trail trips are charged as Flat Rate – you pay the same price for 1 or 2 or 11 passengers. Our mobile payment system

Copyright © The Backyard Universe Pty Ltd ABN 66 611 133 263

www.thebackyarduniverse.com.au

phone 0488 705 224

tbu@thebackyarduniverse.com.au

Heysen Trail minibus shuttle services

version 1.6 November 2022

accepts Mastercard, Visa and smartphone payments. We also accept cash.

If you're a small group we may combine your trip with another small group's trip to improve our travel efficiency and reduce our environmental impact. And you share the cost of your trip with them.

We encourage walkers to spend at least half a day walking the Trail to properly appreciate the experience. Some location pairs are separated by less than three hours walking time, therefore we don't normally service such pairings. See the notes for each location.

This part of the Heysen Trail is entirely within the **Mt Lofty Ranges Fire Ban District**. Segments of the Heysen Trail that cross private land are officially closed to walkers during the Fire Danger season (normally early November to mid-April). Other segments along public roads, Conservation Parks, forests, nature & coastline reserves will also be closed on Total Fire Ban days. For your own safety we will not transport you onto an officially closed segment of the Trail. For more information on fire bans visit the Country Fire Service website www.cfs.sa.gov.au or phone 1800 362 361.

The popular Cape Jervis to Victor Harbor section – also known as **Wild South Coast Way** – is normally open all year except on days of Total Fire Ban.

Our Heysen Trail pickup / drop-off locations	WALKING distance from Cape Jervis (kilometres)
Cape Jervis next to ferry terminal	0
Cobbler Hill campground , in Deep Creek Conservation Park	13.0
Trig campground , in Deep Creek Conservation Park	20.0
Tapanappa campground , in Deep Creek Conservation Park	26.0
Yapari Ngawanthi / Cliffs walk-in campground , in Deep Creek Conservation Park (near Tappanappa)	26.4
Tunkalilla Beach car park (inland on the hillside above the beach)	34.5
Balquhidder (Callawonga Creek Rd)	39.7
Kurri Ngawanthi / Creek campground (Mt Scrub Road, formerly Ballaparudda camp)	42.5
Waitpinga campground , in Newland Head Conservation Park	53.5
Kings Beach car park, near Victor Harbor. The Heysen Trail turns inland from here. The Wild South Coast Way continues another 4km along the coastline into Victor Harbor.	64.5
Newland Hill (Range Rd / Waitpinga Rd), near Victor Harbor	68.0
Tugwell Road (Tugwell Rd / Halls Creek Rd), near Victor Harbor	69.5

Robinson Hill campground (Hancock Rd)	79.5
Inman Valley (Inman Valley Rd / James Track, western end of town)	84.2
James Track (between Inman Valley and Myponga)	88.5
Causeway Road (Causeway Rd / James Track), near Myponga	99.4
Lawless Lane (Lawless Lane / Hindmarsh Tiers Rd), near Myponga	106.5
Cleland Gully Road (Cleland Gully Rd / Wood Cone Rd / Victor Harbor Rd), near Mount Compass	121.3
Mount Magnificent Road (car park)	132.5
Woodgate Hill Road , Kyeema Conservation Park	138.8
Chookarloo car park, Kuitpo Forest	149.0
Dashwood Gully Road (Wicks Rd / Dashwood Gully Rd), near Meadows	158.6

Detailed descriptions and GPS coordinates of each location (WGS84 latitude/longitude and UTM GDA94) are shown on the following pages, modified from published Heysen Trail guides and incorporating recent changes to the Trail. GDA2020 coordinates differ by about 2 metres from GDA94.

Campgrounds along the Trail and in nearby towns may be booked out during South Australian school holidays and public holiday weekends. See www.schoolholidayssa.com.au for holiday dates. Most campgrounds on the Trail have public toilets, but their toilet paper sometimes runs out.

Most of the **rivers and creeks** along this part of the Trail will dry up during the summer months. **Water** is usually available from the public rainwater tanks at camping sites, but sometimes runs out during busy periods. You should boil or sterilise or microfilter any water before drinking it or cooking with it.

Mobile phone coverage along this part of the Heysen Trail varies from excellent to non-existent. **Telstra** and **Optus** currently offer the best coverage in the region. **Vodafone** coverage is poor or non-existent outside of the larger towns. All three networks provide 4G services. 3G is still available but is planned to be progressively shut down during the next few years. 5G service doesn't exist here.

Emergency phone calls to 000 (police / fire / ambulance) will connect to whichever mobile network (Telstra, Optus, Vodafone) has the best signal at the location, regardless of your provider. ***You need enough signal at your location for a voice call – SMS or texting to 000 does not work.*** Calls to 000 will also work if your mobile has no remaining credit, no active account, or is missing its SIM card. Australian mobile phones can also call 000 even if their screen is locked (look for "Emergency Call" on the lock screen).

International mobile phones that can use 112 as their emergency call number will be automatically forwarded to 000 within Australia; using whichever mobile network has the best signal at the location. Dialling 112 in Australia doesn't route your call through a satellite unless you're using an

actual satellite phone.

If you're using a US mobile phone in an emergency, remember that calling 911 does not work in Australia! And for our NZ or UK visitors, calling 111 or 999 doesn't work here either. Dial 000.

Be prepared to wait some time for medical rescue if you're not near a road. A helicopter may need to be flown in to your location.

If you need help but it's not a life-threatening emergency, try calling either 131 444 (police assistance) or 132 500 (state emergency services & rescue). If you're having car trouble call the RAA on 131 111 for roadside assistance.

The **Handy GPS** app is available for iPhone, Android & Windows Phone and it provides the equivalent of a basic handheld GPS unit; including your current location, waypoints, track logs and geo-tagged photos. **Switching your phone to flight/aeroplane mode will extend your phone's battery life in places with no mobile phone coverage**, and still allows its camera & GPS to work.



Regional location map 1; Cape Jervis ferry terminal to Ballaparudda campground.



This section of the Heysen Trail is also part of the **Wild South Coast Way**, and it is open to walkers all year except on days of Total Fire Ban. The 10km between Cape Jervis and Blowhole Beach is relatively easy. The next 18km through the Deep Creek Conservation Park goes over several ridges and valleys, featuring 200-300 metre elevation changes and several creek crossings.

Tunkalilla beach often has soft sand, and while you're on the beach also keep alert for sudden large waves. The steep climb from Tunkalilla Beach up to Balquhider can get very slippery when wet.

Two recently renovated walk-in campgrounds are also known by their Ngarrindjeri names:

- Eagle Waterhole is *Wuldi Krikin Ngawanthi*.
- Ballaparudda (formerly Balquhider camp) is *Kurri Ngawanthi*.

The new walk-in campground about 400 metres north of Tapanappa is *Yapari Ngawanthi*.

Telstra & *Optus* mobile phone coverage along this part of the Trail is marginal to non-existent, except near Cape Jervis and on Cobbler Hill. You might also get coverage from high ground near Tapanappa or Balquhider but it is not reliable. *Vodafone* coverage is non-existent except at Cape Jervis; where it is unreliable.

During May to October keep an eye out for whales migrating along this coastline.

The **Cape Jervis** ferry docks are at the end of the main road (B23) from Yankalilla & Adelaide. The large building by the harbour is the *Sealink*¹ ferry terminal. The *KI Connect*² ferry docks on the other side of the harbour (by the boat ramp) but has an office on the main road about 10 minutes walk away. The *Cape Jervis Tavern* is also on the main road about 15 minutes walk away.

Car parking near the harbour is time-limited and can get very busy, especially on long weekends and school holidays. Do NOT park on the helicopter pad by the lighthouse! Unattended vehicles parked in the ferry waiting areas may be towed away. Sealink offers overnight/multi-day paid parking in a locked area near their building. Supervised parking is also available at the Cape Jervis Caravan Park, the KI Connect office, and the Tavern.

The Heysen Trail (and Wild South Coast Way) begins between the Sealink building and the public toilets, heading south along the coast here.

Telstra & Optus mobile phone coverage is good around Cape Jervis. Vodafone coverage is non-existent to unreliable.



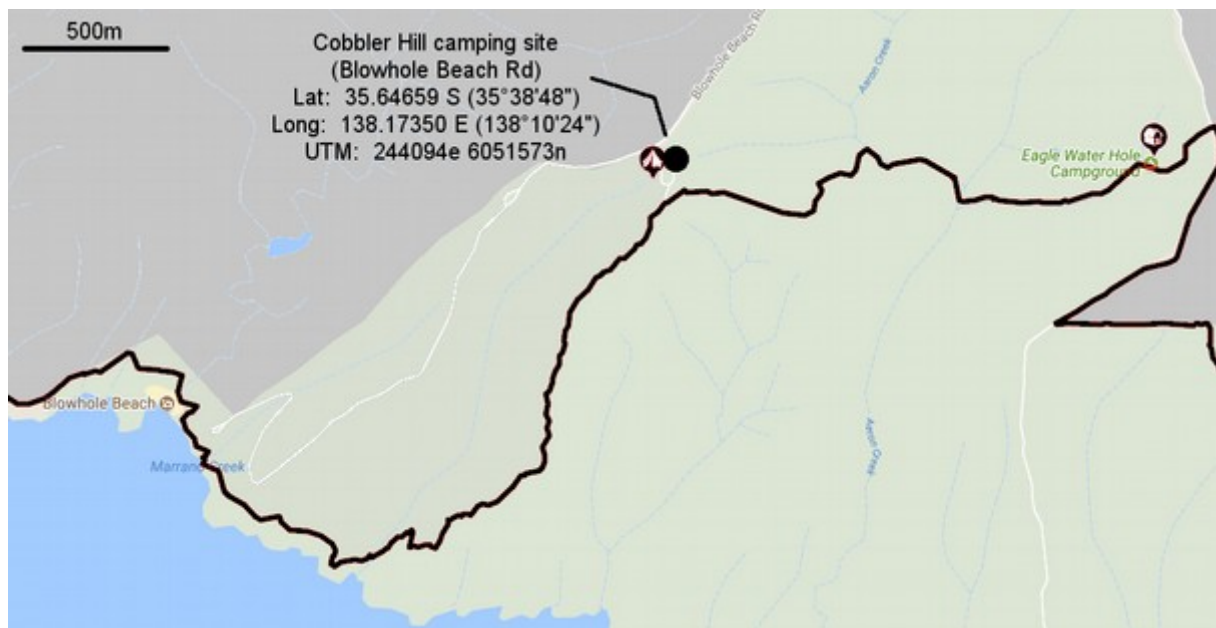
1 Sealink ferry www.sealink.com.au

2 KI Connect ferry www.kic.com.au

Cobbler Hill campground. Near the end of Blowhole Beach Road, about 150 metres north of the Heysen Trail. Connects to the Trail via a short branch trail. Parking available along road side by camp entrance. Public toilet. Telstra & Optus mobile phone coverage here. *Inside Deep Creek Conservation Park*. Fees are charged for vehicle entry and for overnight camping. Camp sites in Deep Creek need to be booked in advance – pay at the Fleurieu Visitor Information Centre, the Delamere General Store, or online: www.parks.sa.gov.au The **Wuldi Krikin Ngawanthi / Eagle Waterhole** campground is walk-in only and not open to vehicles.

2 wheel drive vehicles using the 4 wheel drive track down to Blowhole Beach may be fined for disobeying the *4WD-only* warning signs. They may also need a 4 wheel drive tow truck to get them back up the hill – and there is no mobile phone coverage at the Beach car park.

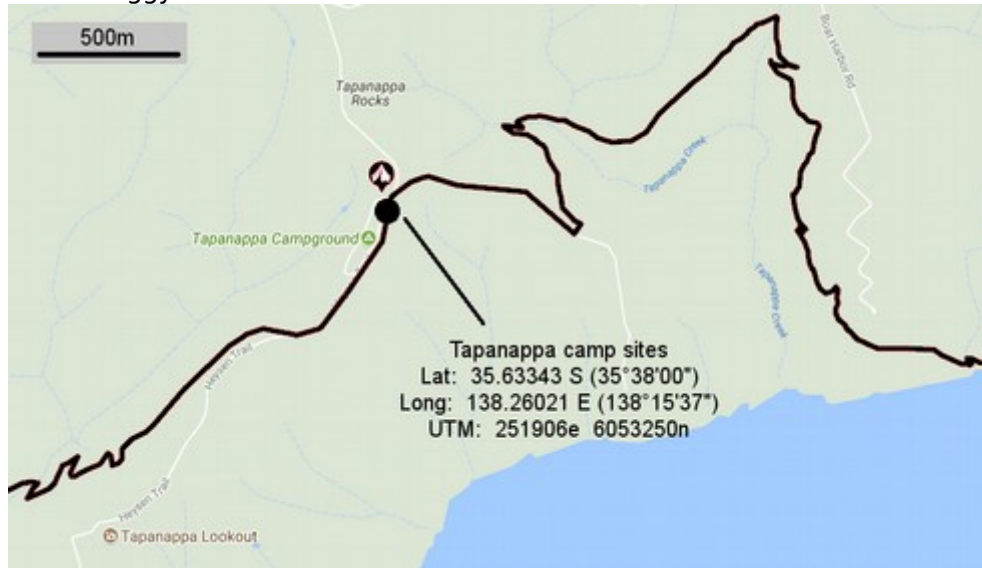
The walk from Cobbler Hill to Cape Jervis is mostly easy gradients after the descent to Blowhole Beach, and is about a half day walk for beginners.



Trig is a large campground at the end of Tent Rock Road. The Heysen Trail passes through its northern end, which is our pickup location here. Public toilets. Parking available along some road sides. **No mobile phone coverage.** *Inside Deep Creek Conservation Park.* Fees are charged for vehicle entry and for overnight camping. Camp sites in Deep Creek need to be booked in advance – pay at the Fleurieu Visitor Information Centre, the Delamere General Store, or online: www.parks.sa.gov.au



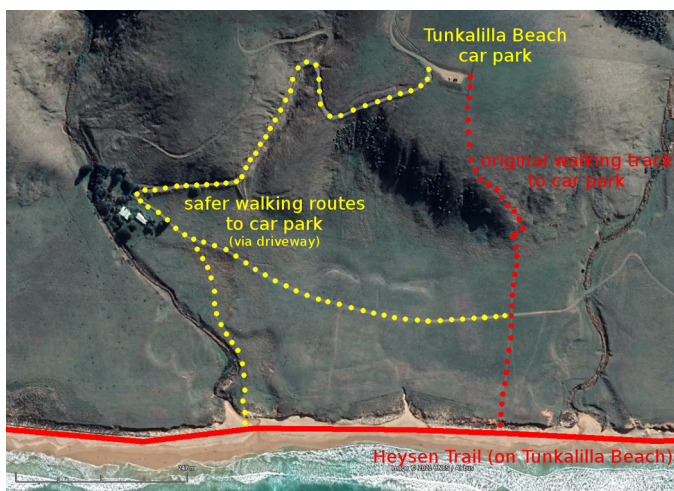
Tapanappa is the original drive-in campground near the end of Tapanappa Road. The new **Yapari Ngawanthi / Cliffs** walk-in campground is near the road about 400 metres north of here. Parking is available along the road side near Tapanappa campground. **Unreliable mobile phone coverage.** *Inside Deep Creek Conservation Park.* Fees are charged for vehicle entry and for overnight camping. Camp sites in Deep Creek need to be booked in advance – pay at the Fleurieu Visitor Information Centre, the Delamere General Store, or online: www.parks.sa.gov.au The walk from here to Cape Jervis, or from here to Kurri Ngawanthi / Ballaparudda campground, is a full day walk for experienced walkers. The Tunkalilla beach between here and Balquhider can get very soft and boggy.



Tunkalilla Beach car park is about 500 metres inland from the beach and about 110 metres above sea level. **No reliable mobile phone coverage.**

The final 500 metres of Tunkalilla Beach Road into the car park is a 1-in-5 descent on a gravel track. Always put your vehicle into first gear (NOT “drive” or “D”) before starting down this slope. People have died here after losing control of their cars. And if you don’t have a 4 wheel drive or all-wheel-drive car and it’s raining, then don’t drive down this final slope at all. Park in the roadside clearing before the top of the slope and walk down the final few hundred metres. Also when driving out, use first gear until you reach the top of this slope.

The original walking track (marked in red below) between the beach and the car park is badly eroded and slippery where it descends the steep slope below the car park. It is much safer to detour (marked in yellow) around this slope using the farmers’ gravel driveway from the car park to the flat ground below it. The original walking track crosses this driveway and reaches the beach at approximately 35°38.3' S 138°18.9' E (-35.6385, 138.3156) or UTM 256930e 6052830n; 8km from Tappanappa camp, and about 1.5km from the west end of the beach. If you’re coming from Tappanappa there’s a shortcut beginning about 1.1km from the west end of the beach, along the creek to the driveway.

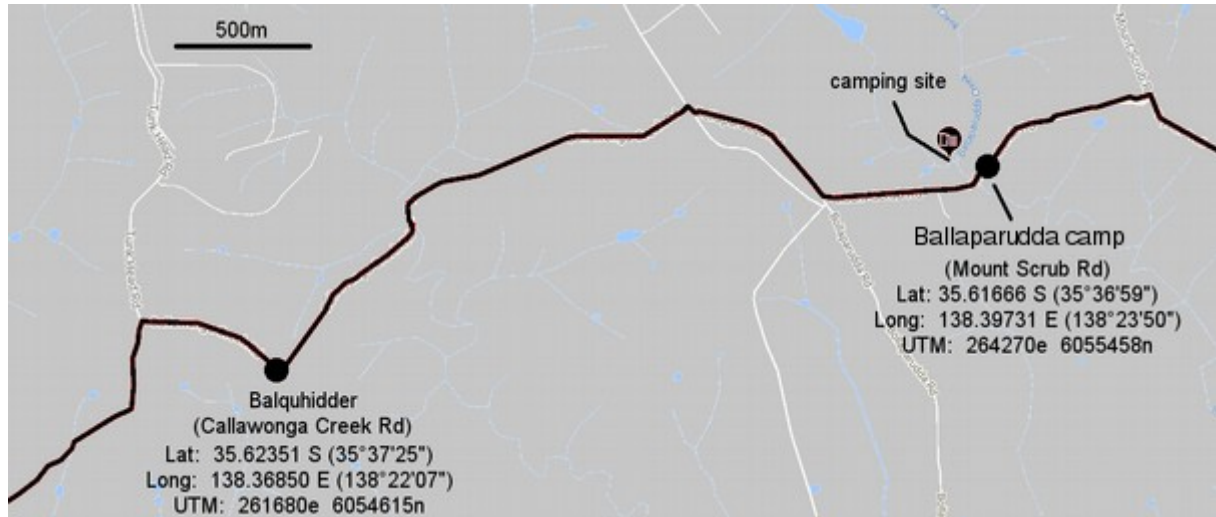


Tunkalilla Beach can get very soft and tiring to walk on. Also beware of walking close to the water on the harder sand because large waves may occur here without warning.

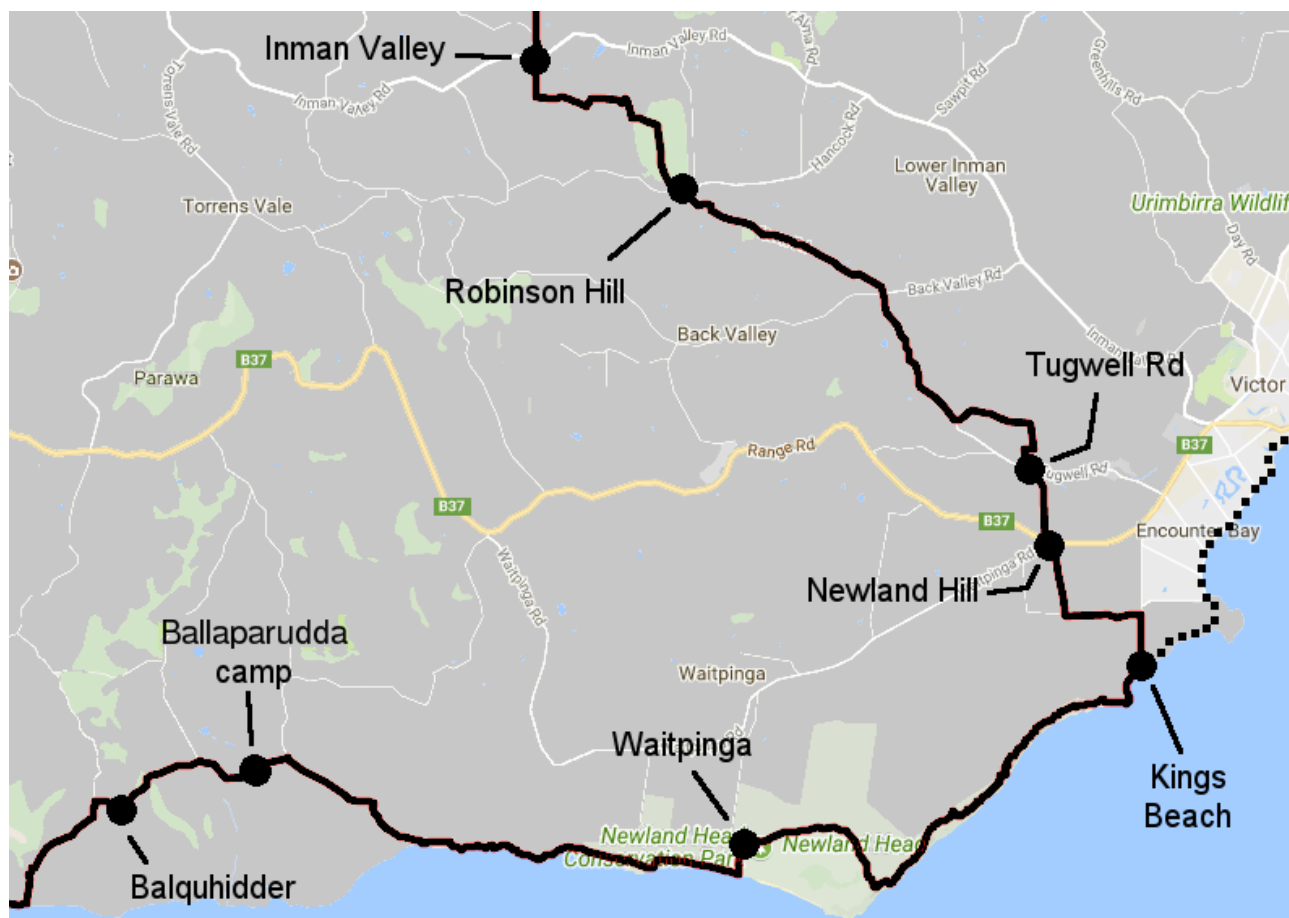
There are no facilities at this car park. It is a popular spot for hang gliders because of the consistent winds and mostly-unobstructed terrain.

Balquhidder and **Kurri Ngawanthi / Ballaparudda campground**. The latter is a walk-in campground near the road. **No mobile phone coverage.** Parking available along road sides at both locations, but beware of soft road edges and large stones. Also do not obstruct farm gates. Best access route for both locations is via Bollaparudda Road, starting by the Range Road (Parawa) Uniting Church. The Trail between these locations is on gravel roads.

The climb from the east end of Tunkalilla Beach to Balquhidder is steep, and very slippery when wet.



Regional location map 2; Kurri Ngawanthi / Ballaparudda campground to Inman Valley.



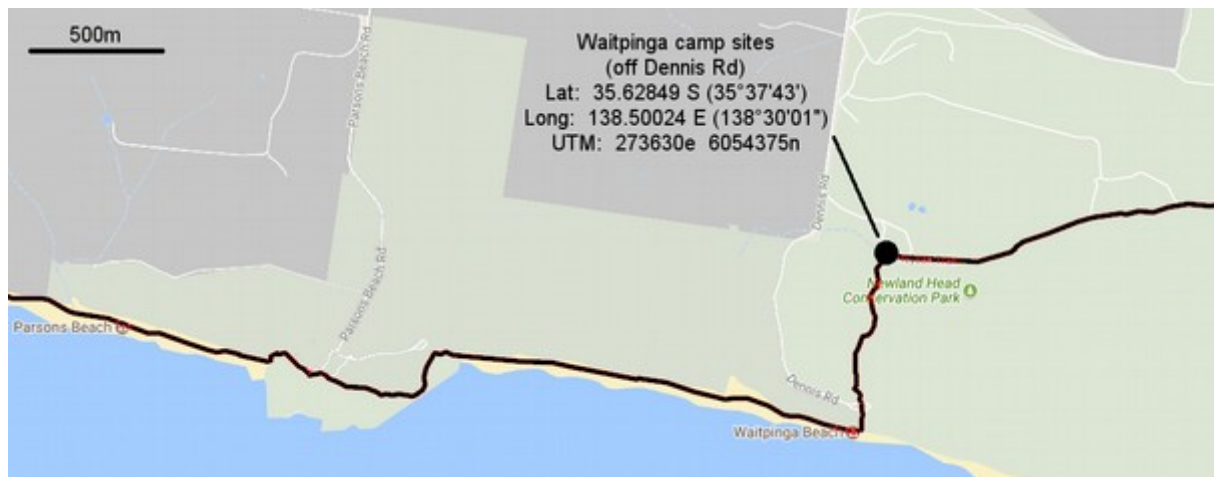
Telstra & Optus mobile phone coverage west of Waitpinga is poor to non-existent, and has some dead spots between Waitpinga and Kings Beach. *Vodafone* coverage west of Waitpinga is non-existent, and unreliable between Waitpinga and Kings Beach. Coverage for all networks rapidly improves north of Kings Beach.

Kings Beach is also the western end of the *Victor Harbor Heritage Trail*, an easy 2km walk along the coast towards Victor Harbor. This in turn links onto the *Encounter Bikeway*, a 32km walking + bicycle trail through Victor Harbor and along the coast to Goolwa. The Wild South Coast Way follows these trails from Kings Beach carpark into Victor Harbor.

Most of the Heysen Trail between Kings Beach and Inman Valley is on public lands or gravel roads. The private properties just south of Newland Hill and just north of Tugwell Rd can be detoured around by walking along nearby roads.

Waitpinga campground. *Inside Newland Head Conservation Park.* Parking bays are available along the driveway from Dennis Road into the camp area. Public toilets in the camp area. Vehicle entry & parking is free, but a fee is charged for overnight camping and sites need to be booked in advance. There is also a new walk-in campground about 800 metres east of Waitpinga, known as **Natunyuru Ngawanthi / Sand Dunes**. Pay camp site bookings online at: www.parks.sa.gov.au

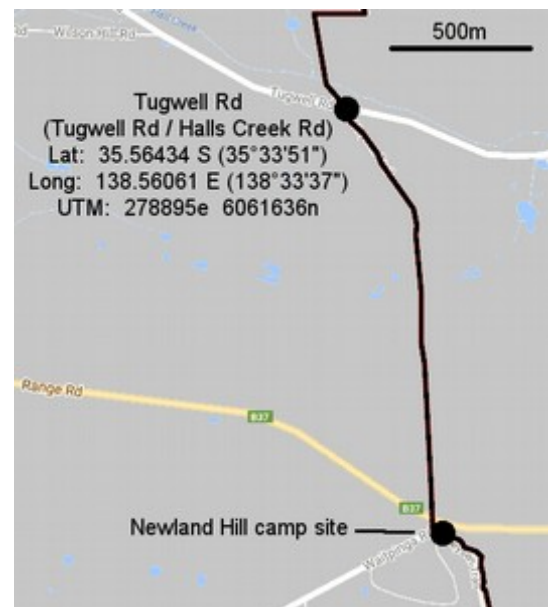
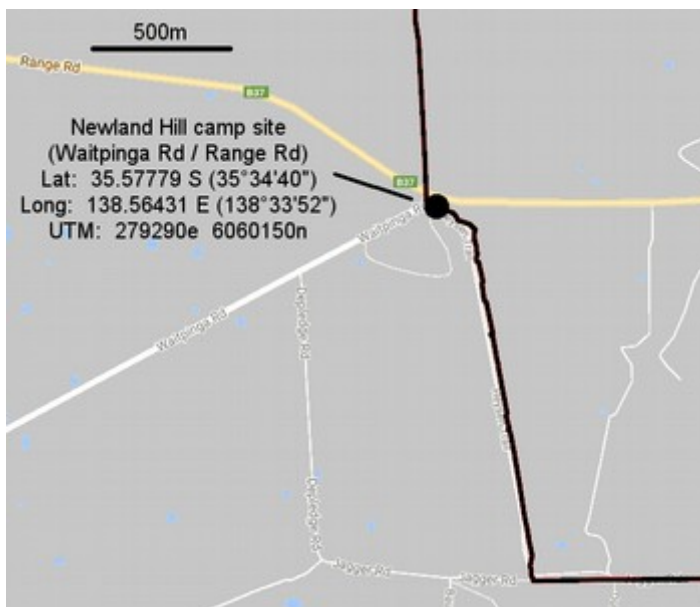
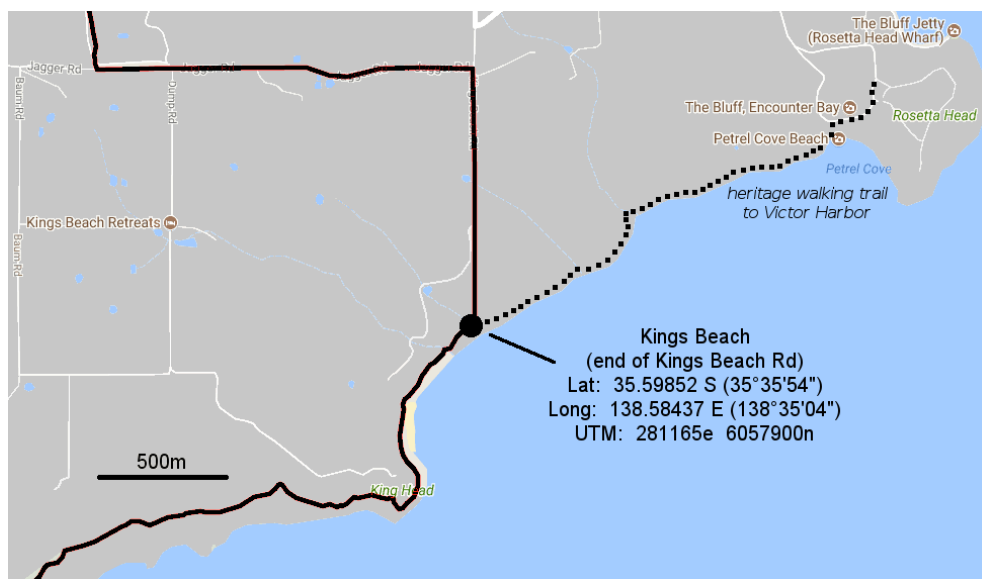
There are additional car parks at nearby Waitpinga beach, and at Parsons Beach about 3km to the west of here. The beaches west of here can get very soft.



Kings Beach / Newland Hill / Tugwell Rd are all about 7km walking distance from the centre of the large town of Victor Harbor. We do not normally offer transfers directly between these three locations; but we can transfer between any of these points to/from Victor Harbor or elsewhere. Victor Harbor also has local taxi & bus services.

Mobile phone coverage at King's Beach is non-existent to unreliable, but improves inland along Kings Beach Road, and eastwards along the coast towards Victor Harbor.

Kings Beach is also the western end of the *Victor Harbor Heritage Trail*, an easy 2km walk along the coast towards Victor Harbor. This in turn links onto the *Encounter Bikeway*, a 32km walking + bicycle trail through Victor Harbor and along the coast to Goolwa. The Wild South Coast Way follows these trails from Kings Beach carpark into Victor Harbor.



Kings Beach has lots of roadside parking, and a wheelchair accessible cliff-top observing platform by the carpark.



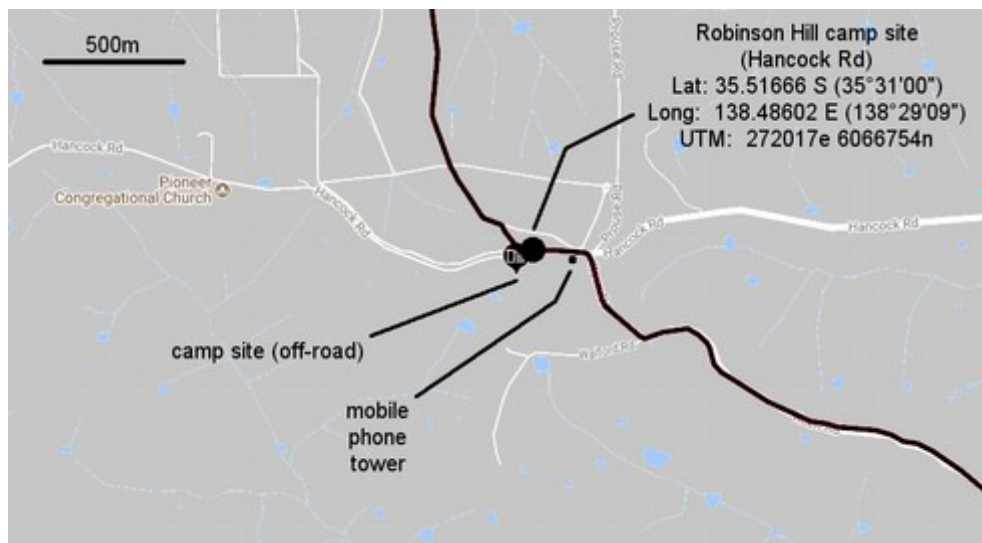
Newland Hill has limited roadside parking at our pickup/dropoff location (intersection of Waitpinga Road / Range Road), and the campground is about 150 metres southeast (between the quarry and the road). Unattended vehicles obstructing the quarry's entrance here may be towed away.



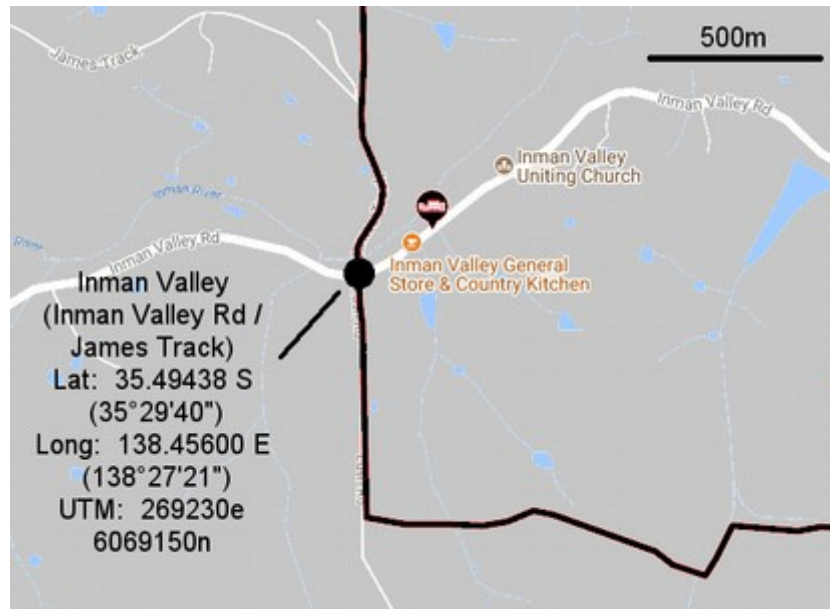
Tugwell Road has very limited roadside parking but it is more secluded.



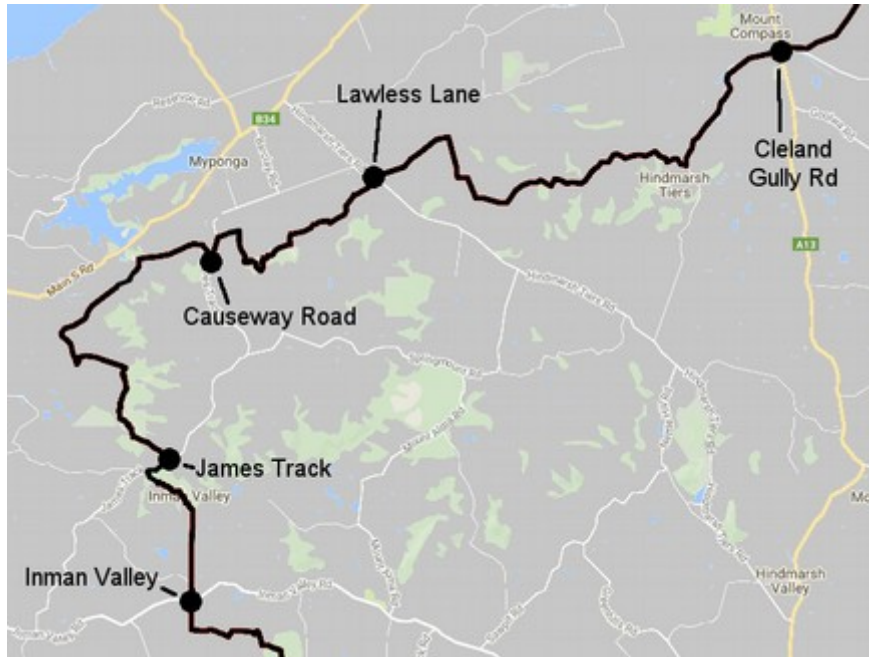
Robinson Hill (between the towns of Victor Harbor and Inman Valley) has very limited roadside parking near the campground. Our pickup location is the Forest Reserve entrance, across the road from the campground. Beware of soft road edges along nearby Prouse Road and Keen Road, if parking there.



Inman Valley is a small town with a general store & cafe, and public toilets, on the main road between Yankalilla and Victor Harbor. The Trail goes through the west end of the town. An alternative Trail routing from Robinson Hill continues north through the forest reserve onto a minor road that joins Inman Valley Rd east of the town. Roadside parking is available just north of the bridge on James Track, and around the memorial hall opposite the general store.

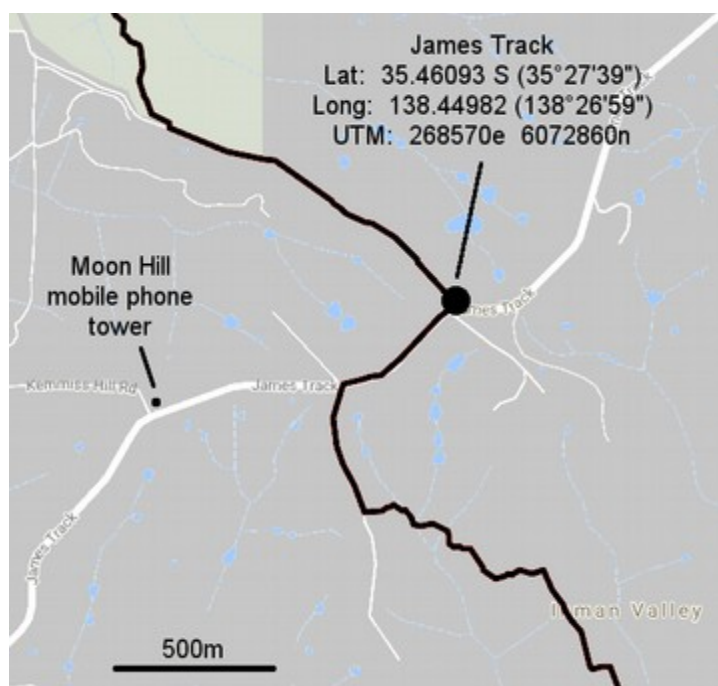


Regional location map 3; Inman Valley to Cleland Gully Rd.

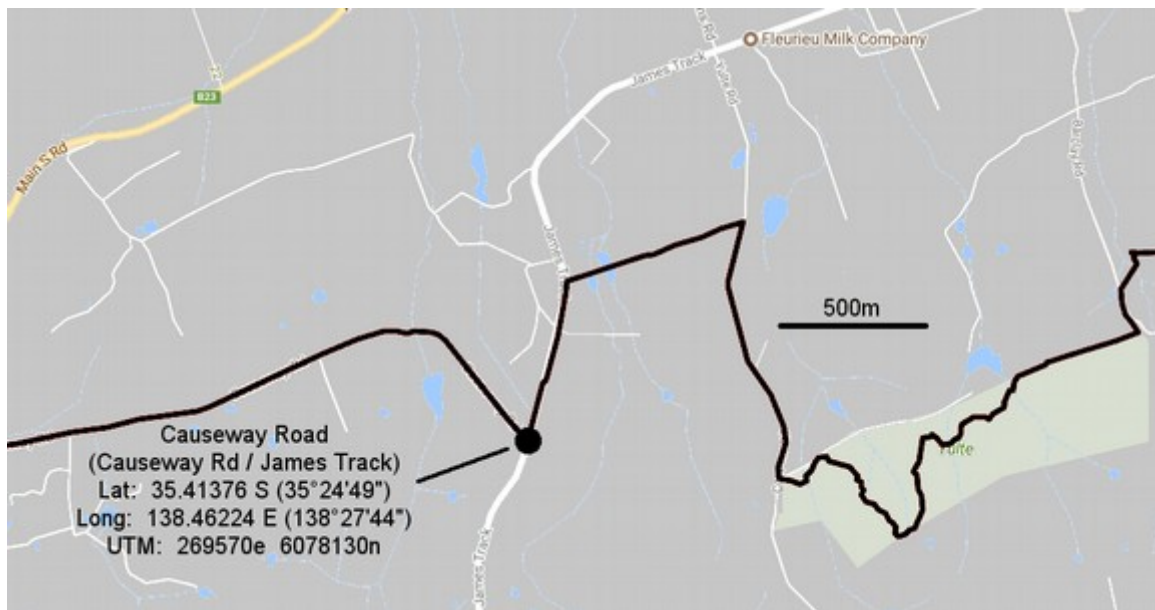


Mobile phone coverage on this part of the Trail is good. Several parts of the Trail route here cross private properties, which are closed to walkers during Fire Danger season.

James Track has roadside parking at this location (between the small towns of Myponga and Inman Valley). Do not block gates or driveways.

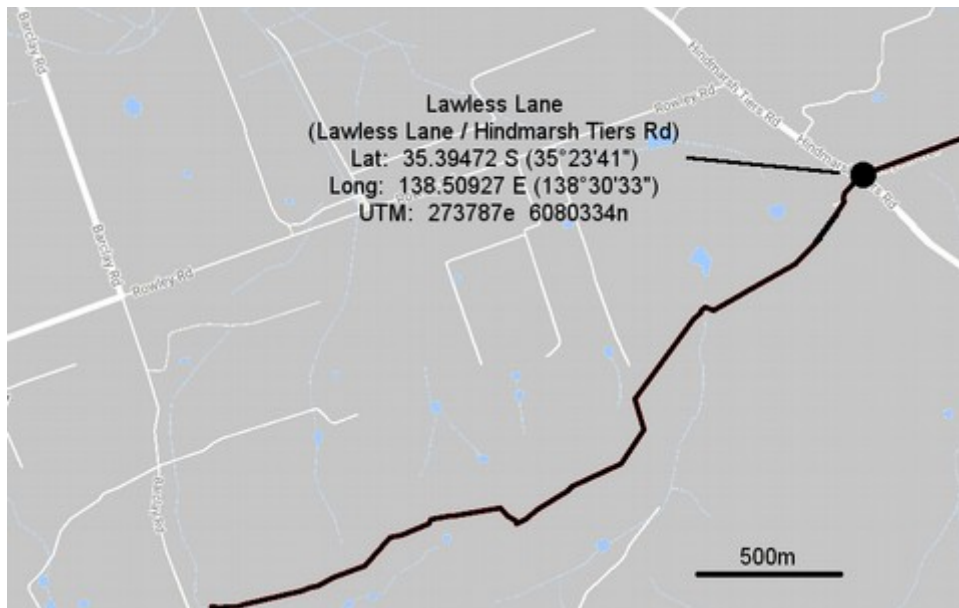


The **Causeway Road** location (near the town of Myponga) has some roadside parking near the intersection with James Track. Despite their names, the Track is bitumen here and the Road is unsealed.

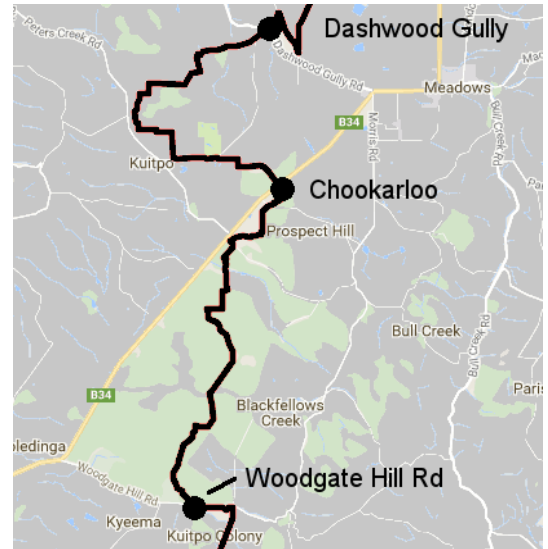


Note: we don't use the official Yulte Road location (about 1km from here) because there's no safe place to stop our minibus – or any vehicle – anywhere nearby. There's also nowhere nearby to turn our minibus around.

Lawless Lane (near the town of Myponga) has limited roadside parking to the east of its intersection with Hindmarsh Tiers Road. Beware of ditches and soft roadside edges, and if it's rained recently also beware of slippery road surfaces here. The Mount Cone camp site, between here and Cleland Gully Road, is closed to overnight campers.

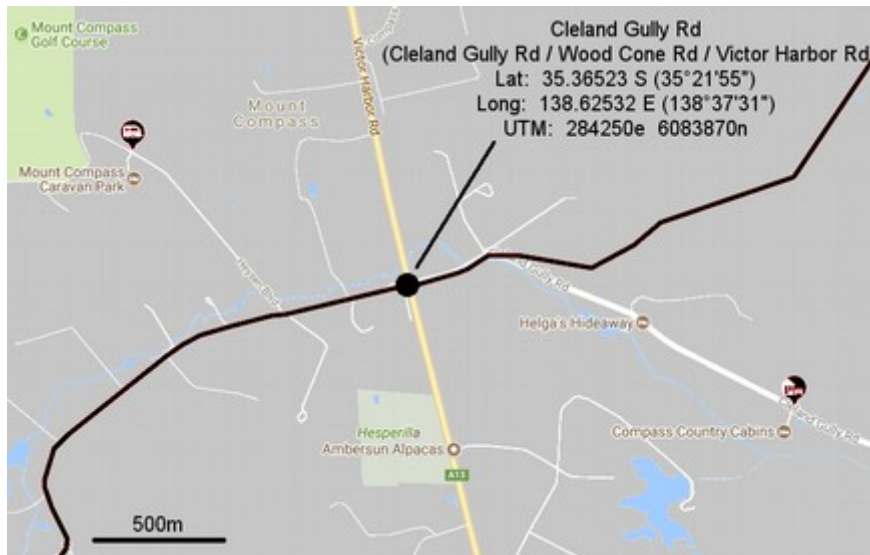


Regional location maps 4 & 5; Cleland Gully Rd to Dashwood Gully.

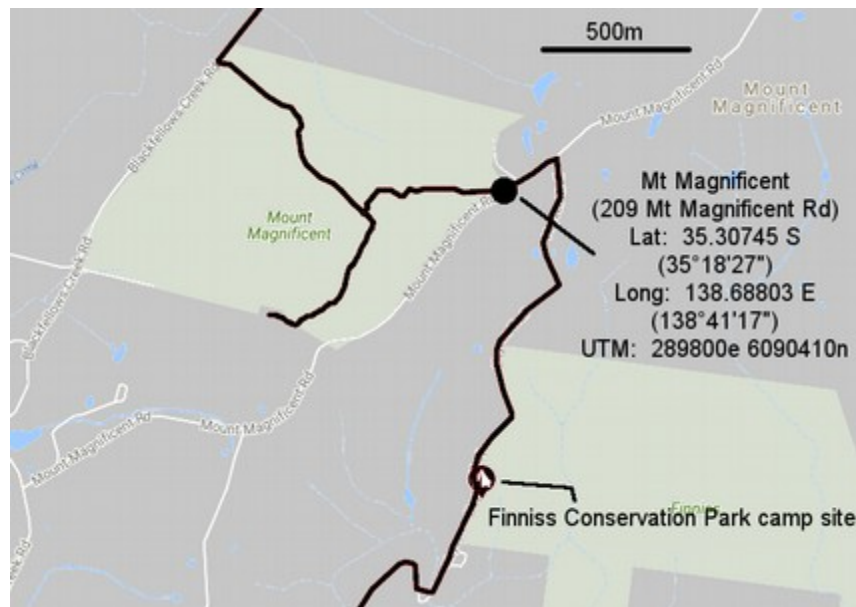


Mobile phone coverage on this part of the Trail is generally good, except in the deep valleys around Mt Magnificent. Some parts of the Trail route here cross private properties, which are closed to walkers during Fire Danger season.

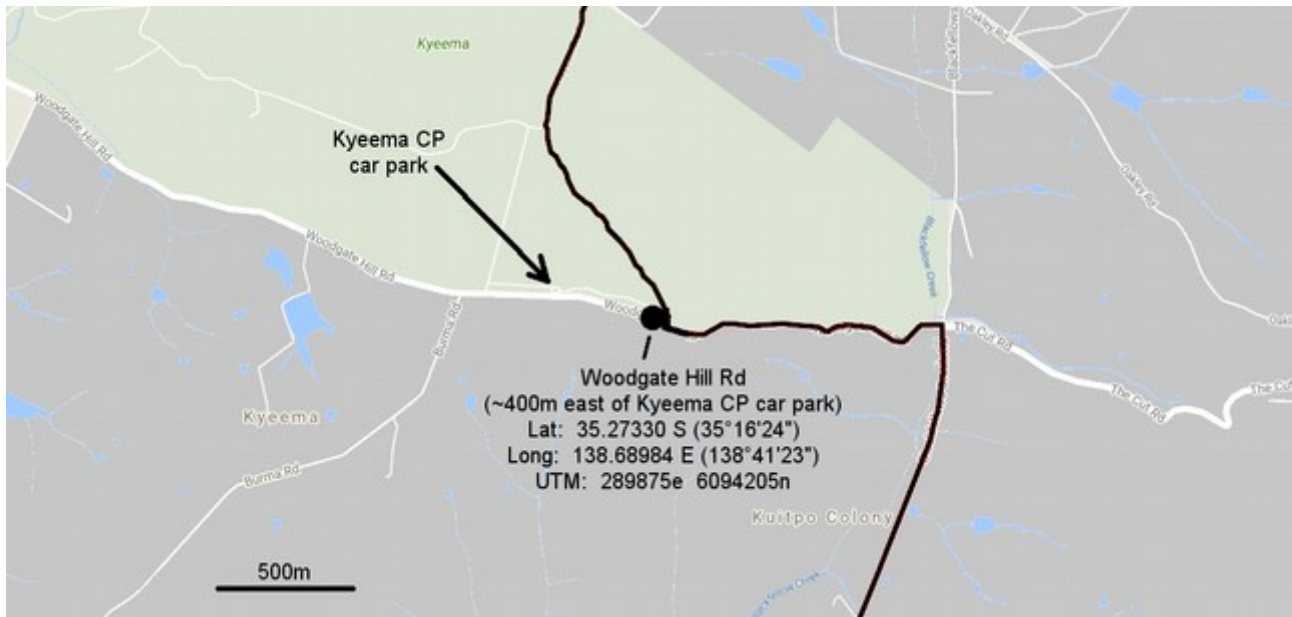
Cleland Gully Road (near the town of Mt Compass) has limited roadside parking. Plenty of roadside parking exists nearby on Wood Cone Road (on the other side of the Victor Harbor Road). We do not recommend roadside parking on the busy Victor Harbor Road. The Mount Cone campsite, between here and Lawless Lane, has been closed to overnight campers.



Mount Magnificent Road has a small car park at this location, for the Mount Magnificent and Finnis Conservation Parks. Do not block driveways or gates if you park on the roadside. There is a walk-in camp ground in the Finnis Conservation Park.



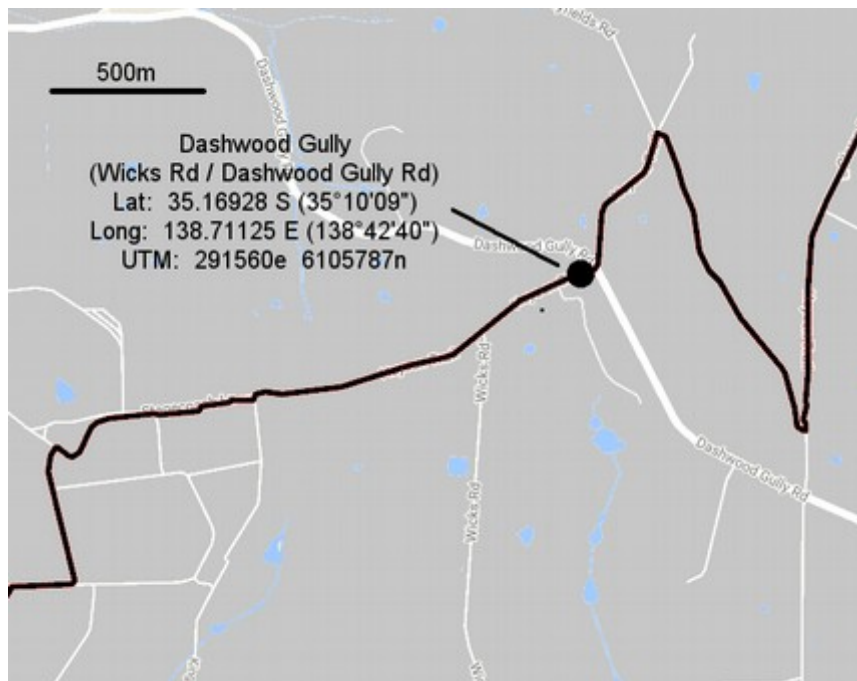
The official **Woodgate Hill Road** location has no safe all-weather parking on the Trail. If you need to park use the nearby Kyeema Conservation Park car park.



Chookarloo campground & picnic area is **inside Kuitpo Forest Reserve**. Public toilet. Parking is free for walkers & day visitors but Forestry SA charges a fee for overnight camping. No camping is allowed during Fire Danger season. Closed to the public on Total Fire Ban days, and (occasionally) during forest logging operations. The main entrance gate from Brookman Road is our pickup point, because the gate itself is sometimes locked after 4pm. Brookman Road is the main road through the Kuitpo Forest and has lots of roadside parking.



Dashwood Gully Road is the main road between the towns of Meadows and Kangarilla. Our pickup / dropoff location is the intersection with Wicks Road; 158.6km walk from Cape Jervis. Limited roadside parking here due to soft road edges, trees, and crash barriers.



The Adelaide hills suburb of Mylor is another 23km of Trail walking beyond this location over hilly terrain. Mylor is serviced by Adelaide Metro public buses and by several Adelaide taxi companies.